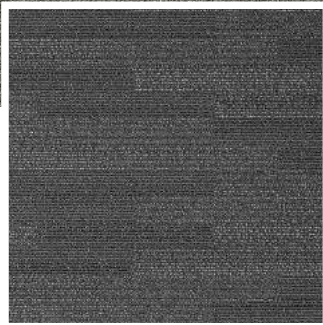


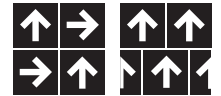
shift



Shift - Powder



Shift - Mink



Specification

Style Name	FL
Construction	Tufted Multi-loop Pile
Face Fiber	100% Sunylon Nylon BCF
Dye Method	Solution Dyed
Pile Weight	840 g/m ² (24.8 oz/yd ²) ±5%
Gauge	1/10 in
Pile Height	4.5mm (0.177 Inch) ±5%
Tile Size	50cmx50cm
Backing	Fosaback™
Installation Method	Quarter-Turn/Brick Recommended

Performance Specifications

Flammability	ASTME-648 & E-662
Hot Metal Test	BS 4790: Hot Metal Nut, Method 1 Pass
Light Colorfastness	BS 1006 B02, Grade 5 Pass
Rubbing Colorfastness	BS EN ISO 105x12 Pass
Dimension Stability	CNS 13924 L32498 Condition: 24 hrs ≤0.2%
Electrostatic Propensity	CNS 13595 10≤2.0 KV 20% R.H., 70F
Soil Resistance	3M Test Pass

FlorONE
CARPET TILES

www.floronecarpettiles.com



001